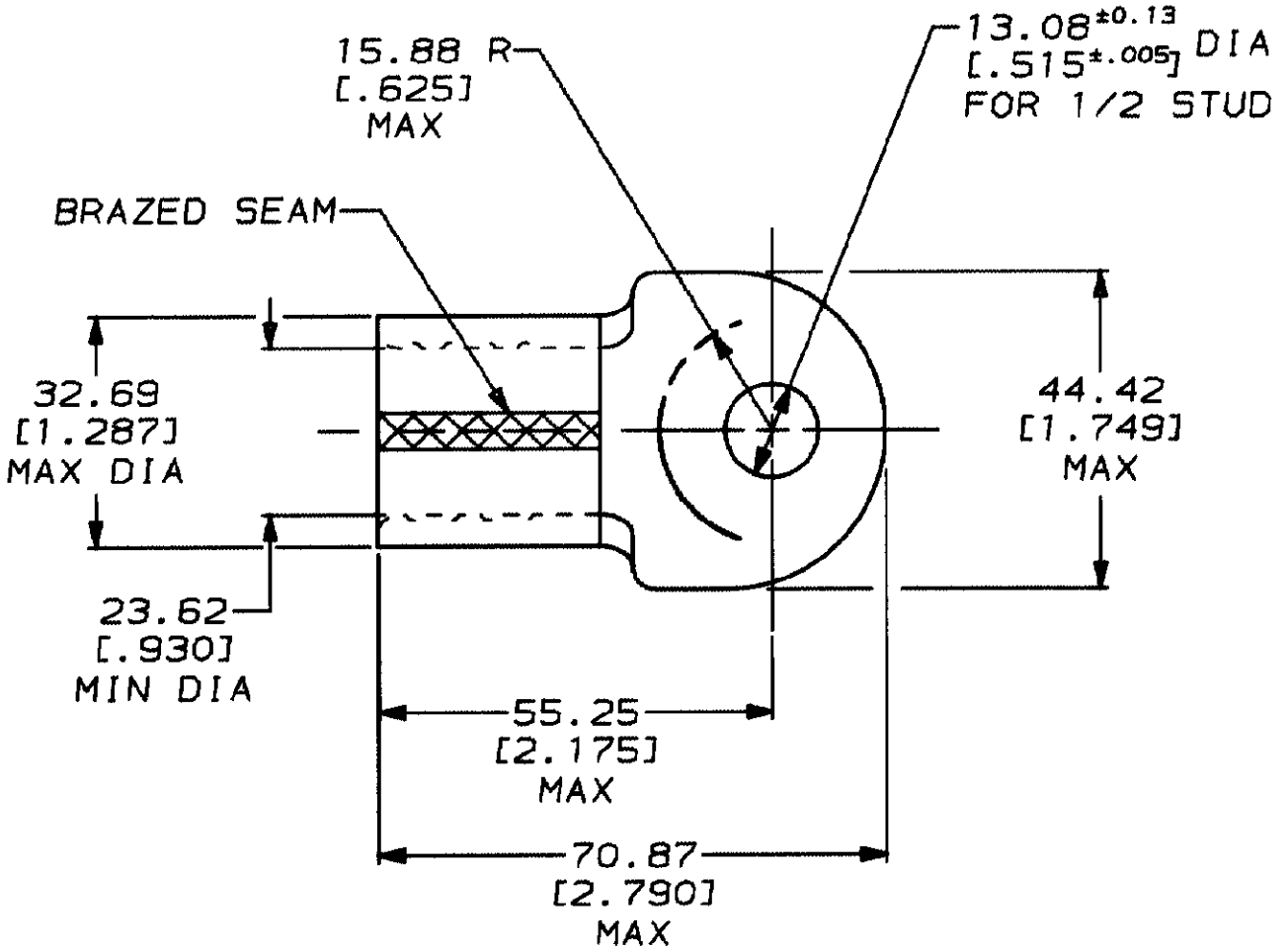


THIS DRAWING IS A CONTROLLED DOCUMENT FOR AMP INCORPORATED.
IT IS SUBJECT TO CHANGE AND THE CONTROLLING ENGINEERING
ORGANIZATION SHOULD BE CONTACTED FOR THE LATEST REVISION.

DRAWING MADE IN THIRD ANGLE PROJECTION

| LOC | DIST | P | F | LTR | DESCRIPTION | DATE | APPROVED |
|-----|------|---|---|-----|------------------------------|---------|-----------|
| G | 14 | | | F | REVISED & REDRAWN PER G-5803 | 6/12/92 | DKS / AJK |

THIS DRAWING IS UNPUBLISHED. RELEASED FOR PUBLICATION BY AMP INCORPORATED. ALL INTERNATIONAL RIGHTS RESERVED. © COPYRIGHT 19



322264

PART NO

DO NOT SCALE PRINT, UNLESS SPECIFIED
DIMENSIONS IN MM (IN)
TOLERANCES ON:
1 PLC DEC ± 0.20 [.008]
2 PLC DEC ± -
3 PLC DEC ± -
ANGLES ± -

MATERIAL
COPPER ASTM B-152
ANNEALED

FINISH TIN PLATE
0.00254 [.000100] MIN
THK PER MIL-T-10727

DR 6/12/92
DK SCHRUM

CHK 6/26/92
RD HEIM

APPO 6/26/92
AJ KAUFMAN

APPO 6/26/92
CR RHOADS

PRODUCT SPEC
-

APPLICATION SPEC
-

WEIGHT -

AMP

AMP Incorporated
Harrisburg, PA 17105-3608

NAME
TERMINAL, RING TONGUE, SOLISTRAND™
WIRE SIZE: 203.0mm² [400] MCM

SIZE
A

CAGE CODE
00779

DRAWING NO
C-322264

SCALE
1:1

SHEET
1 OF 1

AMP 1469-32 REV 3-92

12 JUN 1992

13:03:46

AMP26463

<US128A>DEPT1123>DWG1123>U. SOLISTRAND>0 MCM

CUSTOMER DRAWING